

CANDIDATE
NAME

--

CENTRE
NUMBER

--	--	--	--	--

CANDIDATE
NUMBER

--	--	--	--



PAKISTAN STUDIES

2059/02

Paper 2 The Environment of Pakistan

October/November 2016

1 hour 30 minutes

Candidates answer on the Question Paper.

No Additional Materials are required.

READ THESE INSTRUCTIONS FIRST

Write your name, Centre number and candidate number in the spaces provided.

Write in dark blue or black pen.

Do not use staples, paper clips, glue or correction fluid.

DO **NOT** WRITE IN ANY BARCODES.

Answer any **three** questions.

The Insert contains Photographs A and B for Question 1 and Photograph C for Question 2.

The Insert is **not** required by the Examiner.

The number of marks is given in brackets [] at the end of each question or part question.

This document consists of **21** printed pages, **3** blank pages and **1** Insert.

1 (a) Study Fig. 1 which shows the distribution of monthly rainfall in Karachi.

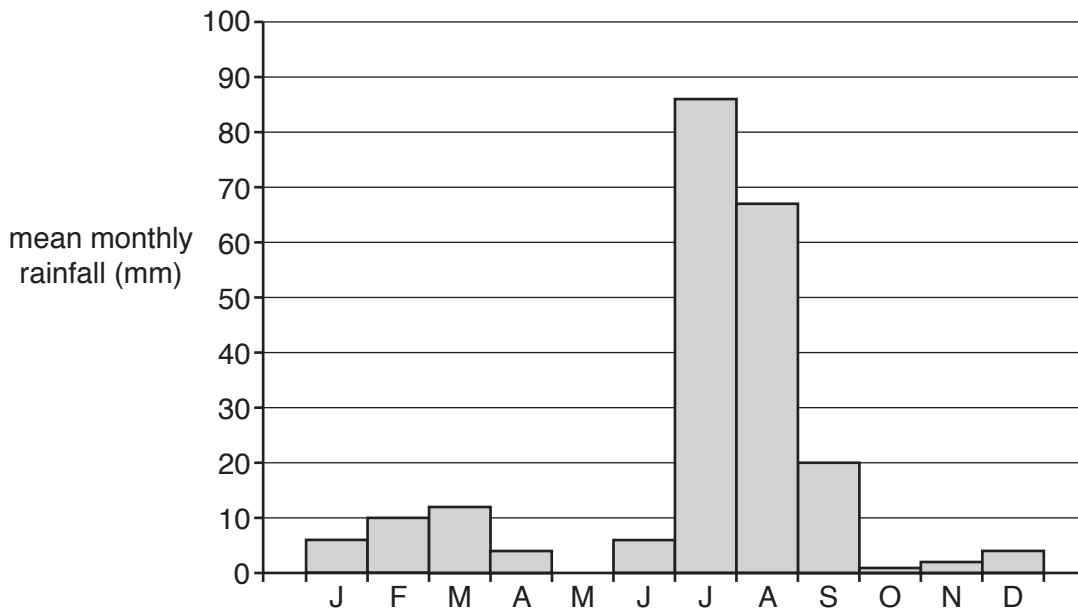


Fig. 1

(i) A For how many months does Karachi experience less than 10 mm rainfall?

.....

B Estimate the total rainfall in Karachi for the period July to September.

..... [2]

(ii) Describe briefly the climatic region in which Karachi is located.

..... [1]

(iii) What is the main source of rainfall in Karachi? From which direction do the rain-bearing winds come?

Source

Direction [2]

(iv) Describe the effects of tropical cyclones on cities such as Karachi.

.....
.....
.....
.....
.....
.....
.....
.....
.....
..... [4]

(b) Study Photographs A and B (Insert) which show parts of the lower Indus valley. Using the photographs and your own knowledge, explain the advantages for agriculture in areas like this.

.....
.....
.....
.....
.....
.....
.....
.....
.....
.....
.....
.....
.....
.....
..... [4]

(c) Study Fig. 2 which is a map showing different forest types in Pakistan.

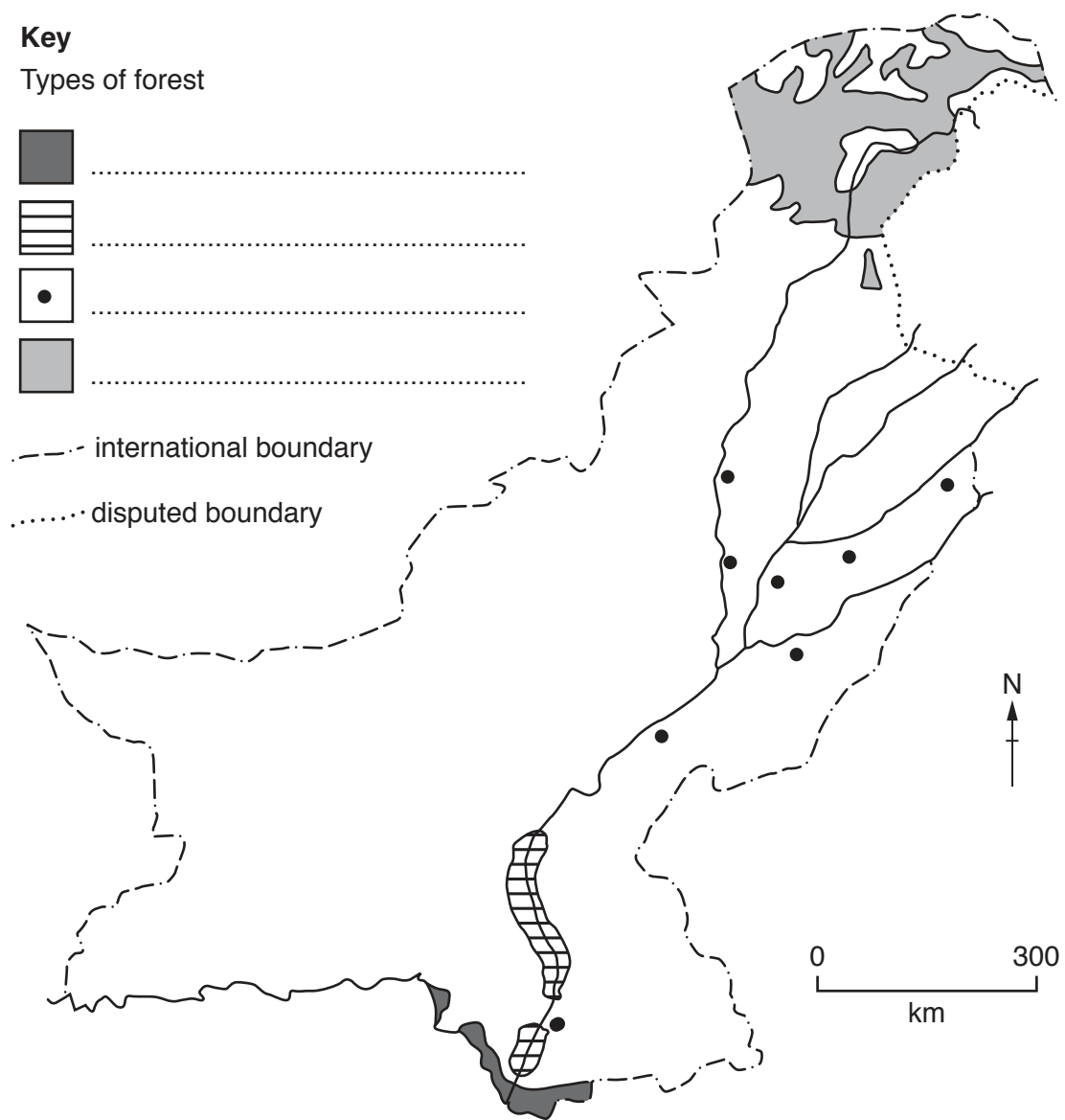


Fig. 2

(i) In the key, name the types of forest shown on the map.

[2]

- (ii) For **one** of the forest types you have named in (i):
- Describe the features of the forest.
 - Explain the uses or purpose of the trees that grow there.

Forest type name

Description

.....

.....

.....

Explanation

.....

.....

.....[4]

- 2 (a) Study Fig. 3 which is a map showing the locations where three different non-metallic minerals are extracted in Pakistan.

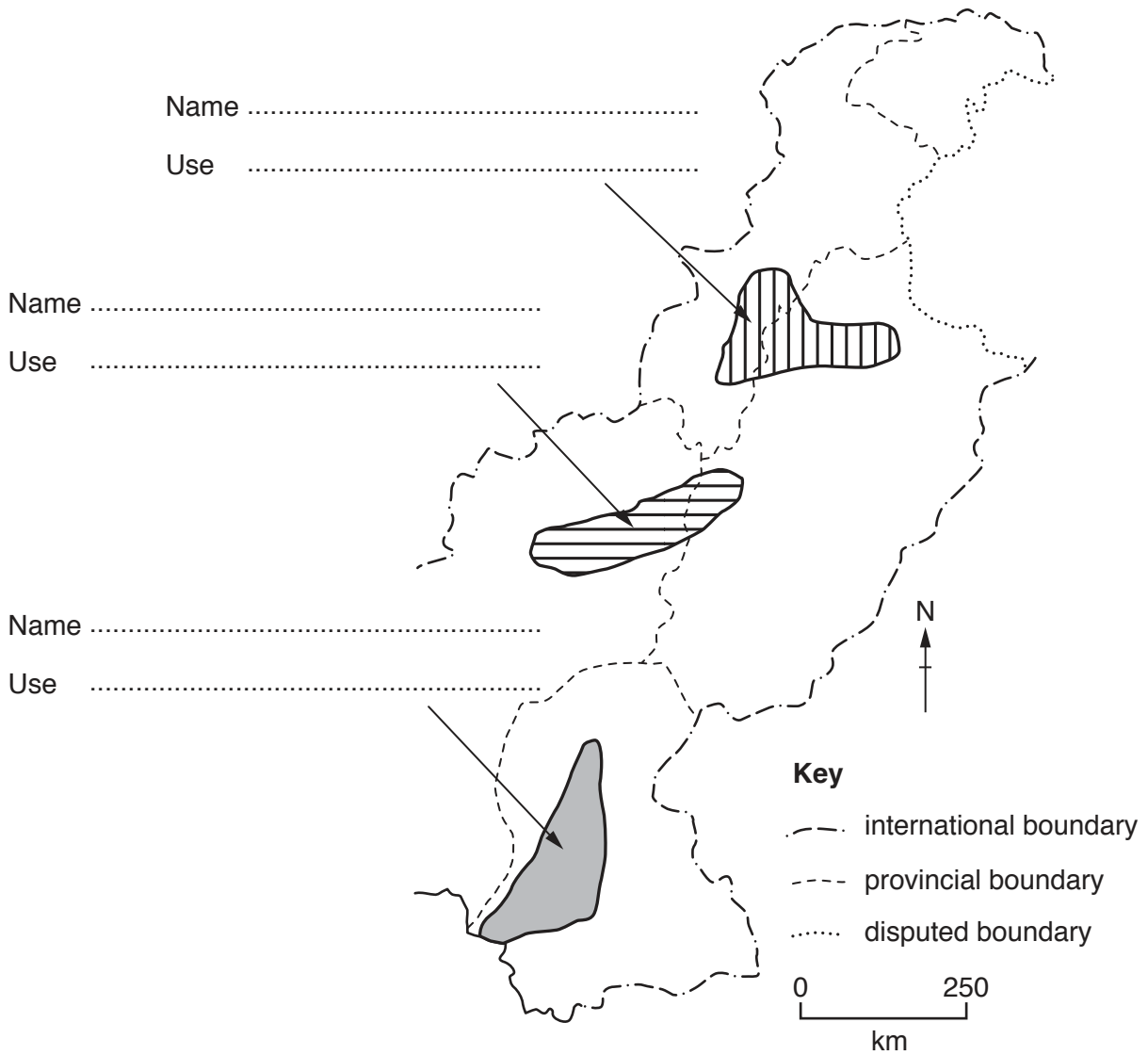


Fig. 3

- (i) For any **two** locations, state the name of the mineral extracted and a use for this mineral. Write your answers in the spaces provided on Fig. 3. [4]

You should choose from the following list:

gypsum

limestone

rocksalt

(ii) Using Fig. 3 and your own knowledge, suggest difficulties there may be in getting minerals to export markets.

.....
.....
.....
.....
.....
.....
.....[3]

(b) Study Photograph C (Insert).

(i) Name the type of livestock shown in this photograph.

.....[1]

(ii) Why is this type of livestock valuable to the farmer?

.....
.....
.....
.....
.....
.....
.....[3]

(iii) What environmental problems can be caused by keeping this type of livestock?

.....
.....
.....
.....[2]

(c) (i) Name **two** of Pakistan's main exports.

1

2 [2]

(ii) Read the following article:

Pakistan produces many goods that could be exported in greater quantities. For a variety of reasons the amount of exports remains low: in 2013 the value of exports was only 13% of GDP.

Explain why it is difficult for Pakistan to sell more of its goods to other countries.

.....
.....
.....
.....
.....
.....
.....
.....
.....
..... [4]

3 (a) Study Fig. 4 which is a diagram of a coal mine.

Type of mine

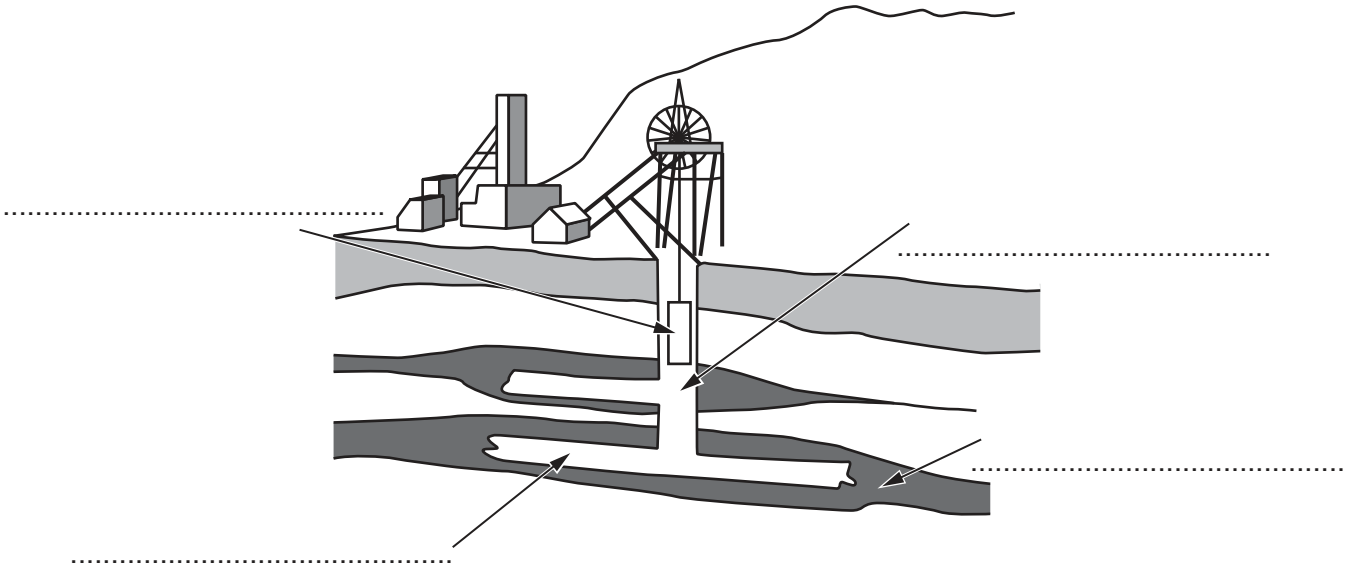


Fig. 4

(i) Choose **two** terms from the list below and use them to label the diagram in any **two** of the spaces provided.

adit cage shaft open-cast seam tunnel [2]

(ii) Suggest **two** reasons for using this type of mine and **one** disadvantage of using it.

Reason

.....

Reason

.....

Disadvantage

..... [3]

(iii) What type of coal is imported by Pakistan and how is it used?

Type

Use

..... [2]

(b) Explain what the fuel CNG is and state the main reasons for using this fuel.

.....

.....

.....

.....

.....

.....

.....

.....

.....

..... [4]

(c) Study Fig. 5 which is a graph giving information about different non-renewable fuels used for electricity production in Pakistan over the period 2006–11.

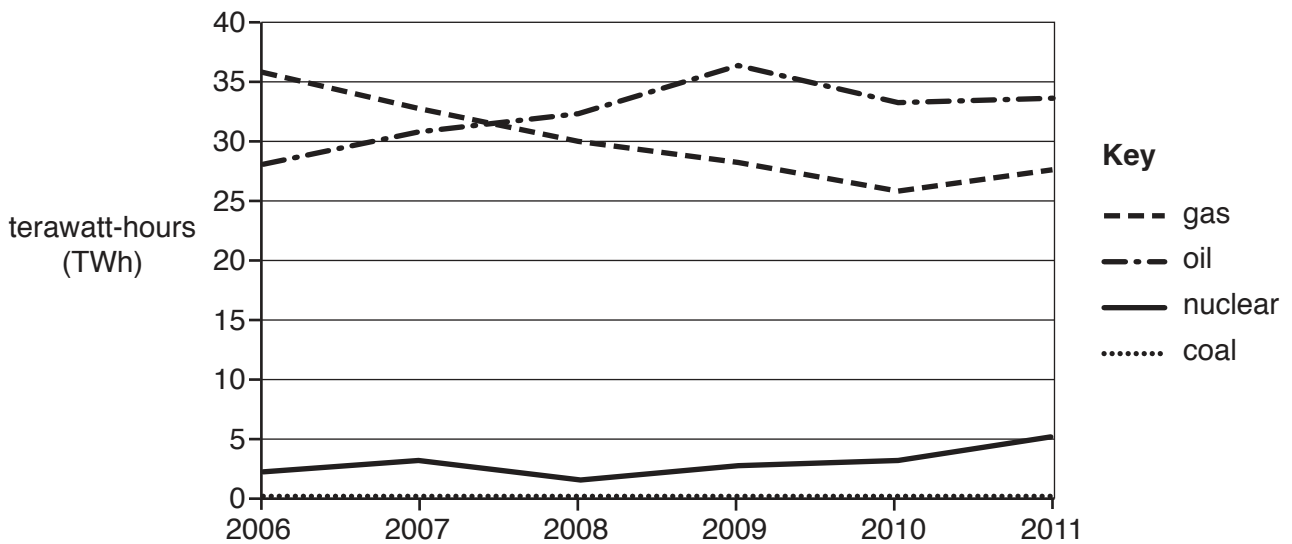


Fig. 5

(i) What is meant by the term ‘non-renewable fuel’?

.....

.....

.....

.....

..... [2]

(ii) Which fuel use has increased by the largest amount between 2006 and 2011?

..... [1]

(iii) Use information from the graph to describe **one** main difference between the change in gas used for electricity production and the change in oil used for electricity production.

.....
.....
.....
..... [2]

(iv) Explain why so little coal is used for electricity production in Pakistan.

.....
.....
.....
.....
.....
..... [3]

(d) Read the following article:

Energy crisis

Industrial growth in Pakistan relies on the availability of energy. Pakistan does not produce enough energy for its needs and therefore spends a lot of its earnings on expensive imports of fuels.

Describe briefly different measures that can be taken to solve the country's energy crisis. To what extent can these measures be successful?

.....[6]

[TOTAL: 25]

4 (a) (i) Describe **two** human inputs used in the cultivation of cotton.

1

.....

.....

.....

.....

2

.....

.....

.....

.....

[4]

(ii) Study Fig. 6 which is a graph showing the production of raw cotton in Pakistan over the period 1982–2014.

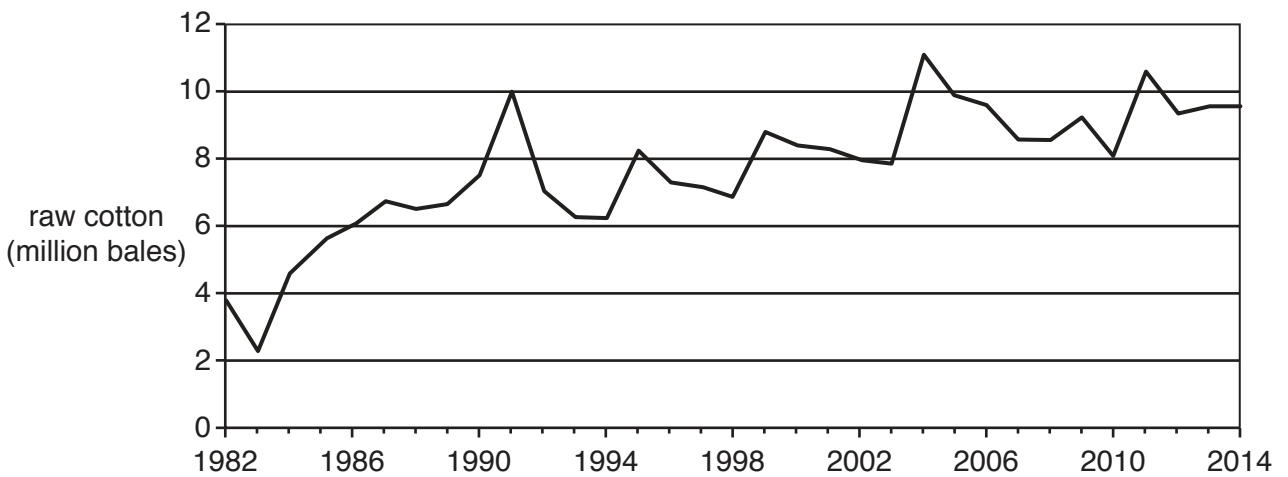


Fig. 6

A Describe the main changes in the production of raw cotton between 1982 and 2014.

.....

.....

.....

.....

.....

.....

.....

[3]

B Suggest **three** reasons for the production levels seen in the years 1991, 2004 or 2011.

- 1
- 2
- 3 [3]

(b) Describe different ways in which governments can support farmers.

.....
.....
.....
.....
.....
.....
.....
..... [4]

- (c) Study Fig. 7 which is a table giving information about agriculture in Pakistan over the period 1950–2010.

Year	Agriculture % share in labour force	Total cropped area (million ha)
1950	66	13
1960	59	15
1970	58	17
1980	53	19
1999	47	23
2007	48	24
2010	45	23

Fig. 7

- (i) Describe the relationship between agricultural labour force and cropped area.

.....

 [2]

- (ii) Suggest reasons for the change over the period 1950–2010 for **either** labour force **or** cropped area, as shown in Fig. 7.

Choice

Reasons

.....

 [3]

5 (a) (i) Study Fig. 8 which is a bar graph giving information about infrastructure spending in Pakistan for 2014–15.

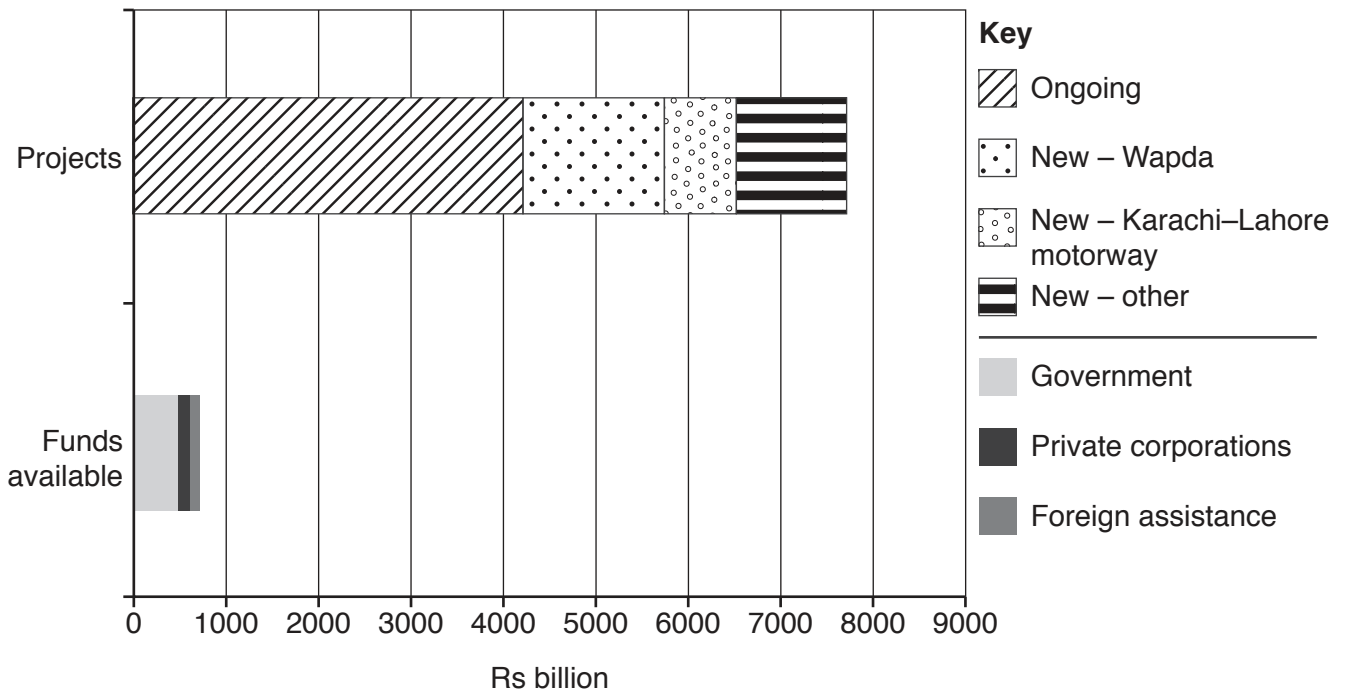


Fig. 8

A What is meant by the term 'infrastructure'?

.....

.....

.....

.....

..... [2]

B Using information from Fig. 8 only, describe problems for infrastructure spending in 2014–15.

.....

.....

.....

.....

.....

.....

.....

.....

.....

..... [3]

(ii) Spending on infrastructure projects is lower in some years than others. Suggest reasons why this might be.

.....
.....
.....
.....
.....
.....
..... [3]

(b) Read the following article:

People move to towns and cities from the countryside for many reasons and often in large numbers. Some people return but most stay. As well as changing the lives of the migrants in many different ways, this rural–urban migration also brings change to the urban areas. The effects can be positive or negative.

(i) State **two** pull factors for the movement of population described in the article.

1
.....
2
..... [2]

(ii) Describe the effects on urban areas of the movement of large numbers of people into them.

.....
.....
.....
.....
.....
.....
.....
..... [4]

(c) (i) Name a fishing port on the Sindh coast.

..... [1]

(ii) Describe activities that are involved in the secondary sector of the fishing industry.

.....
.....
.....
.....
.....
.....
.....
.....
..... [4]

(d) To what extent is it possible to develop the fish processing industry further in Pakistan? Give reasons to support your answer and refer to places or examples you have studied.

.....
.....
.....
.....
.....
.....
.....
.....
.....
.....
.....
.....
.....
.....
.....
.....
.....
.....
.....
..... [6]

[TOTAL: 25]

BLANK PAGE

Permission to reproduce items where third-party owned material protected by copyright is included has been sought and cleared where possible. Every reasonable effort has been made by the publisher (UCLES) to trace copyright holders, but if any items requiring clearance have unwittingly been included, the publisher will be pleased to make amends at the earliest possible opportunity.

To avoid the issue of disclosure of answer-related information to candidates, all copyright acknowledgements are reproduced online in the Cambridge International Examinations Copyright Acknowledgements Booklet. This is produced for each series of examinations and is freely available to download at www.cie.org.uk after the live examination series.

Cambridge International Examinations is part of the Cambridge Assessment Group. Cambridge Assessment is the brand name of University of Cambridge Local Examinations Syndicate (UCLES), which is itself a department of the University of Cambridge.